



Q1  
SPRING &  
SUMMER

FABRICS  
CHINA  
TREND

中国纺织面料流行趋势



中国纺织信息中心 / 国家纺织产品开发中心

# REFRESH 焕新

Among the innovation and transformation of the apparel industry, science and technology focus on the ecological development based on the relationship of mankind and environment, and sustainability has gradually become an important concept that leads people's lives. Circular economy empowers high-quality development, paying attention to the product itself and related production process lets things be easy, smart, comfortable, and durable. Say goodbye to the boring past and explore the collision and fusion between modern comfort and multicultural expression. Minimalism and Maximalism, streetstyle and sportswear leave space to new aesthetic expressions with epochal characteristics.

在革新与蜕变中，科技专注于人与环境的生态美学，可持续性逐渐成为引领人们生活的重要理念；循环经济助力高质量发展，思考并关注产品的真实性和生产过程的轨迹，让一切变得简单、智能、舒适、耐用；打破无聊的墨守成规，以实验性探索现代舒适与多元文化的碰撞与融合，为极简主义和极繁主义、街头风格和运动风格赋予时代特点的新颖诠释，创造出生机盎然的崭新风貌。

21 SPRING & SUMMER



YUAN LI  
**原力**  
CHANG CHANG  
**INNER PEACE**

- |                                   |                                   |                                    |                                    |                                   |                                     |                                   |                                   |                                   |                                    |
|-----------------------------------|-----------------------------------|------------------------------------|------------------------------------|-----------------------------------|-------------------------------------|-----------------------------------|-----------------------------------|-----------------------------------|------------------------------------|
| <b>coloro</b><br>036-89-06<br>象牙色 | <b>coloro</b><br>076-91-00<br>微蓝色 | <b>coloro</b><br>032-85-06<br>浅亚麻黄 | <b>coloro</b><br>024-71-03<br>浅烟紫色 | <b>coloro</b><br>026-85-10<br>浅肉色 | <b>coloro</b><br>115-57-09<br>浅色牛仔蓝 | <b>coloro</b><br>054-85-13<br>淡黄绿 | <b>coloro</b><br>090-53-07<br>灰豆绿 | <b>coloro</b><br>032-78-10<br>浅黄棕 | <b>coloro</b><br>046-85-05<br>浅蟹壳青 |
|-----------------------------------|-----------------------------------|------------------------------------|------------------------------------|-----------------------------------|-------------------------------------|-----------------------------------|-----------------------------------|-----------------------------------|------------------------------------|

向往与自然的同一是人类最深沉的内在愿望，为爱觉醒、谦卑于自然，将人本主义和生态平衡紧密联系；褪去多余的装饰，通过循环经济创建更具耐久性和实用性的淳真品质，强调服装的实穿性与功能性，以流畅灵活的思考方式，探寻艺术、技术与科学的边界，带来饱含惊喜感的本真之物，打造出更有意义的产品。

**色彩：**这是与自然相关的生态色组，宁静朴素的中性色调占据重要地位，与隐形机能白色调配搭，构建功能主义的美学氛围。象牙色、浅亚麻色，让人感觉舒缓安心，如雾般朦胧的水洗蓝色、灰豆绿色，与烟草色一起使用，蕴含着雅致的舒适品质，轻柔的微蓝色，则增添了一抹澄明的清凉感。

**面料：**超轻质感、干爽表面、自然外观，带来简约舒适的穿着体验；天然纤维、原液着色纤维、再生纤维等环保材质是应用重点；Supima® 棉、有机羊毛、天丝™等供应链可追溯产品受到偏爱；同时，高仿真化纤仿天然纤维，实现面料服用性能优化；少水及无水染色、高速数码印花等环保工艺赋予面料绿色内涵；结合涂层、覆膜、复合等形式，赋予面料防水透气、吸湿快干、抗皱免烫、抑菌抗菌等性能。

The strong aspiration for the unification with nature is the deepest inner pursuit of mankind. With the worrying heart for the future of the earth, people always maintain awe of nature. It is urgent to find a suitable relationship between humanism and ecological balance. Focus on more durable and practical quality via a circular economy. Emphasize the wearability and functionality of the apparel. Explore the boundaries of art, technology and science based on a new thinking way, which can bring the design of refined imperfection and more meaningful products.

This is a palette of colors related to nature. The quiet neutral colors occupy an important position, and it is matched with the white tone to build an ecological functional style. Whisper white and whitecap gray make people feel soft and soothing. The mix and combination among faded denim, trellis, and biscotti indicates an elegant comfort quality. And bit of blue adds a touch of clarity of cool feeling.

Lightweight, dry materiality, and precious naturalness, bring a simple and comfortable wearing experience. Eco-friendly materials, like natural fibers, solution-dyed fibers, regenerated fibers are the focus. Supima® cotton, organic wool, Tencel™ and other supply chain traceability products are favored. Besides, the imitation-natural fibers fabrics made of chemical fibers can optimize the wearability of fabrics. Eco-friendly processes, i.e., less water dyeing, anhydrous dyeing, and high-speed digital textile printing, empower the sustainable connotation on fabric. Processes like coating, lamination, etc., can make the fabric have a practical performance with breathable and water-repellent, moisture-absorbent and quick-dry, crease-resistant, and antibacterial properties.

LE XING ZHE  
**乐行者**  
 HAPPY FANTASY



新年轻力引爆颜值经济，被消费社会麻痹的感官重新激活而变得活跃，兴趣优先、注重体验、有自己的品味和鉴赏力，怂恿着乐观主义者去探究生活“新”方式的可能性；拒绝随波逐流，在感性和冒险的交织中，创设了一个关乎灵活感知的奇妙幻觉实验室，节奏随心的传递着快乐的新鲜能量。

**色彩：**跨文化色系融合了精致的粉蜡色调和更加生动的数字化色彩，带来一种充满希望的浪漫主义情绪。薰衣草般的木槿紫色、透明的水绿色与浅紫色，混杂出水彩效果的渐变色度；温柔的杏桃冰色、淡黄色与晨曦粉色相互映衬，为透明材质带来些许轻盈质感；亮眼的翡翠色、石榴红色与之平衡、混搭，带来多样且充满好奇的轻松体验。

**面料：**天然材质与人造材质在此碰撞，垂坠微弹、耐久轻盈又不乏自我愉悦的个性表达。蚕丝、铜氨纤维、醋酸纤维与莱赛尔纤维混纺，柔软又不失骨感，搭配简约流畅的服装廓形，带来科技与舒适的美学平衡；高针织雕琢品质细节，展现都市休闲的时装造型；奇幻花朵、几何元素等魔力符号，结合提花、印花等多样工艺，带来能量充沛的浪漫体验。

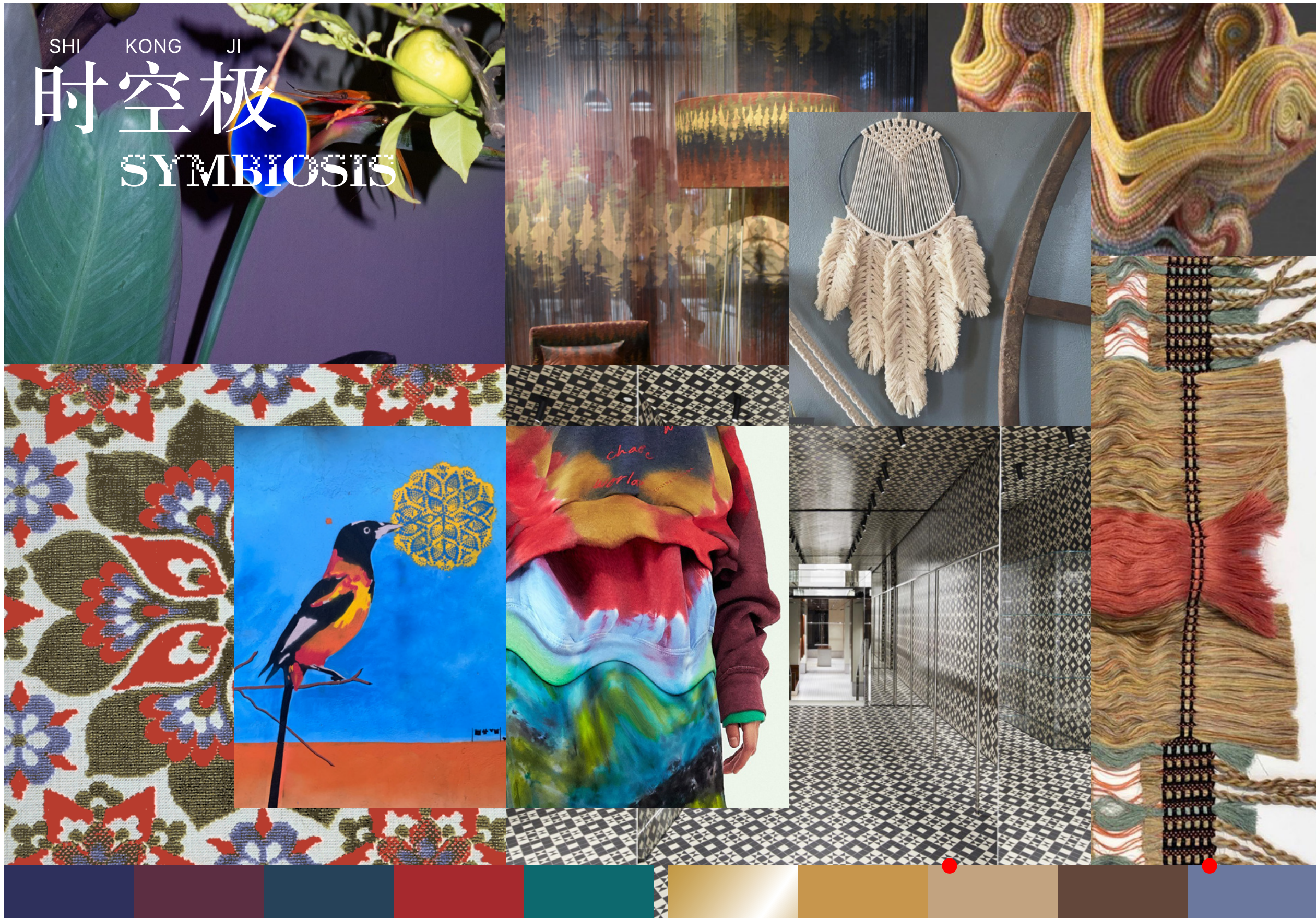
The new youth power stimulates the face score economy, and the senses paralyzed by the consumer society in the past have renewed their vitality. Interest prioritization, experience orientation, and the pursuit of people's own taste and appreciation encourage the optimists to explore the possibility of a "new" way of life. Do not drift with the current, try to create a marvelous laboratory about flexible perception in the intertwining of sensibility and adventure, and convey the fresh energy of happiness.

The transgender color palette blends exquisite pastel wax tones and more vivid digitalized colors, indicating hopeful romanticism. The mix and match of pastel lilac, brook green, and violet show a gradient of watercolor effects. Soft apricot ice, elfin yellow, and aurora pink play with transparency in lightweight. The combination of island green, Sunkist coral create a diverse and creative experience.

The combination of the natural material and the artificial material not only present diverse styles, such as drape, slight elasticity, durability and lightweight, but also full of self-pleasant individual expression. Lyocell fiber blended with silk, cupro, or cellulose acetate fiber can bring us a soft but also well-ironed fabric, together with a simple and smooth garment silhouette, can achieve a balance of technology and comfort. High-quality fine-gauge knitted fabrics present casual urban fashion. A rich romantic experience can be expressed by fantastic floral and geometric elements, with various techniques such as jacquard and printing.



<b>coloro</b> 143-61-24 浅紫色	<b>coloro</b> 008-77-15 粉蜡色	<b>coloro</b> 068-61-30 翡翠绿	<b>coloro</b> 078-84-16 小溪绿	<b>coloro</b> 135-70-13 木槿紫	<b>coloro</b> 120-81-11 珍珠蓝	<b>coloro</b> 152-65-27 晨曦粉	<b>coloro</b> 046-88-24 淡黄色	<b>coloro</b> 024-79-21 杏桃冰色	<b>coloro</b> 005-57-28 石榴红
-----------------------------------	-----------------------------------	-----------------------------------	-----------------------------------	-----------------------------------	-----------------------------------	-----------------------------------	-----------------------------------	------------------------------------	-----------------------------------



SHI KONG JI  
**时空极**  
 SYMBIOSIS

文化多样的都市环境，多元共生、和而不同的意识形态在这里对话并彰显，文明的正位回归，以丰富的表现形式呈现出当代都市的“母语表达”，在传承中唤醒温暖质朴的匠心精神，成为与生态美学双重视域下的符号，勇于创新的演绎文化真功夫，释放后现代美学的多重反思与多元并进。

**色彩:** 色彩连结时空，在对立与统一中追寻珍贵记忆，色调浓烈的猩红色、墨蓝色和油亮的深青色，打造出华美复古的装饰风格；丰富的暖棕色系辅以锃亮的金色，展现出老工匠们的手作之美，搭配驳彩蓝色，融合创新多元文化，呈现出极具现代感的色彩基调。

**面料:** 织锦、苗绣、壁毯元素和提花细节，通过极具戏剧性的新型复古廓形，表现出科技风格的代特征；拼接图案带来环保时尚新视角，通过鲜明的运动细节和明艳的色彩搭配，打造轻奢张扬的街头气质；废弃纱线回用、天然染料染色等呼应可持续设计理念；缂丝、挑花、抽丝绣、扎染、蜡染等精湛的纺织染绣工艺，结合新式的现代审美，带来生态艺术、文化承载与实用主义交融的新观念。

In the context of cultural diversification, diverse symbiosis and different ideologies flourish in the urban city. The increasing attention to civilizations shows that people realize the source of contemporary cities and would like to present them in rich expressions. Pursuing the spirit of craftsmanship during the inheritance becomes as important as ecological aesthetics. Encourage the innovation of cultural treasure and release the multiple reflections and development of aesthetics.

Colors become the medium of time and space and remind us of precious history in the unity of opposites. Pompeian red, blueprint, and harbor blue create a gorgeous vintage style. The rich warm brown palette is complemented by rich gold, showing the beauty of the craftsmen's work. Also, the colony blue adds a modern sense with the combination of innovative multiculturalism.

Through the new dramatic retro silhouette, brocade, Miao embroidery, tapestry elements and jacquard details show the characteristics of the scientific and technological era. Stitching patterns bring a new perspective of environmentally-friendly fashion, entry luxurious and brave streetwear style is created by vivid sports details and bright colors. Recycled waste yarn and natural dyes dyeing are closely related to the sustainable design concept. Kossu fabric, off-patterned cloth, hand-drawn, tie-dyeing, and batik garment are combined with modern aesthetics to bring a new integrated concept of ecological art, cultural bearing and pragmatism.

- |                                    |                                   |                                   |                                  |                                   |                                  |                                   |                                  |                                  |                                   |
|------------------------------------|-----------------------------------|-----------------------------------|----------------------------------|-----------------------------------|----------------------------------|-----------------------------------|----------------------------------|----------------------------------|-----------------------------------|
| <b>coloro</b><br>126-25-20<br>中世纪蓝 | <b>coloro</b><br>154-26-16<br>深紫红 | <b>coloro</b><br>110-29-13<br>黛蓝色 | <b>coloro</b><br>010-35-35<br>猩红 | <b>coloro</b><br>094-38-19<br>深青色 | <b>coloro</b><br>039-66-17<br>金色 | <b>coloro</b><br>033-61-23<br>金菊黄 | <b>coloro</b><br>030-67-13<br>驼色 | <b>coloro</b><br>025-32-11<br>褐色 | <b>coloro</b><br>124-49-17<br>驳彩蓝 |
|------------------------------------|-----------------------------------|-----------------------------------|----------------------------------|-----------------------------------|----------------------------------|-----------------------------------|----------------------------------|----------------------------------|-----------------------------------|



CHAO WAN  
潮玩  
JI  
FUNKY  
PLAYER

时尚与科技的关系不断演化， 将我们带到想象的境遇之外， 游戏化思维注入设计新理念， 多元覆盖推动跨圈层裂变， 构建起小众文化大众化的年轻态沟通方式； 拥抱新国货时代， 敢于破与立， 呈现以本土化和文化自信为根基的鲜活生命力， 带来形状、 色彩、 线条等视觉游戏的沉浸式体验， 这股潮流势不可挡。

**色彩：**这是一组彼此碰撞的亮色， 相互冲突又充满活力， 原色通常以单色呈现， 二元对立的黑白色则是这组色彩的重要基色。 锡箔银色与速度感的亮黄色、 橙色、 宝蓝色组合搭配， 带来茶靡的致幻体验； 旗绿色、 紫藤色等一系列人造感能量色彩， 搭配它们的对比色， 勾勒着层次分明的国风写意， 带来东方美学之潮， 表达和彰显怀旧情怀与时代的混搭。

**面料：**通体单色或单色层搭， 打造让人耳目一新的高级时装风格； 针织或棉型面料与科技材质拼接是应用重点； 双面异处理， 带来更加黑科技和超亲肤的强烈反差； 极具视觉张力的光学纹理和喷涂艺术， 启发前卫造型和潮酷的运动态度； PVC 染色、 科技尼龙， 呈现透明与局部哑光的新颖效果； 涂层工艺打造的镜面闪光、 箔面质感等， 赋予面料科幻主义格调； 再生尼龙、 再生聚酯等材质的应用， 是社会责任和绿色环保理念的重要表现。

The relationship between fashion and technology is constantly evolving, giving us the possibility to think infinitely. Gamification thinking combines with new design concepts, diversified development promotes cross-layer transformation, so that building a youthful communication mode of niche culture. Embrace the new era of domestic products is full of breaks and creations, presenting the vitality based on localization and cultural self-confidence, creating immersive experiences in visual enjoyment such as shapes, colors, and lines. This trend is unstoppable.

A group of bright colors that mix and match with each other, showing sharp contrast and vitality. The primary colors are usually presented in individual monochromatic tones, and black and white are the important primary colors of this palette. The combination of silver, Sulphur spring tone of speedy effect, firecracker, dazzling blue show a magical aesthetics. The color with artificial sense, like viridis, royal lilac, with their contrast colors, outline the unique Chinese style, bringing the trend of oriental aesthetics, and highlighting the mix of nostalgic feelings and the times.

Monochromatic apparel design or the mix and match of monochromatic apparel create a refreshing high-fashion style. The stitching of knitting or cotton fabrics and technical materials is the focus of design. Dissimilar treatment of double-sided fabric brings a strong contrast between the application of futuristic technology and the unique skin-friendly experience. Optical effects and spray art inspire avant-garde styling and cool sports attitude. PVC dyeing and technical polyamide fiber show the novel effect of transparency with partial matte. The mirror-like effect and aluminum foil effect can be created by coating process, making the fabric a sci-fi style. The application of regenerated polyamide fiber and regenerated polyester fiber is an important manifestation of social responsibility and environmental protection concepts.

- |                                  |                                    |                                    |                                   |                                   |                                   |                                   |                                    |                                   |                                   |
|----------------------------------|------------------------------------|------------------------------------|-----------------------------------|-----------------------------------|-----------------------------------|-----------------------------------|------------------------------------|-----------------------------------|-----------------------------------|
| <b>coloro</b><br>049-65-00<br>银色 | <b>coloro</b><br>050-83-41<br>硫磺泉色 | <b>coloro</b><br>151-44-32<br>荧光紫色 | <b>coloro</b><br>018-57-34<br>橙黄色 | <b>coloro</b><br>124-38-32<br>宝蓝色 | <b>coloro</b><br>098-59-30<br>香槟蓝 | <b>coloro</b><br>137-38-29<br>紫藤色 | <b>coloro</b><br>035-71-28<br>向日葵色 | <b>coloro</b><br>001-43-34<br>品红色 | <b>coloro</b><br>078-50-24<br>松波绿 |
|----------------------------------|------------------------------------|------------------------------------|-----------------------------------|-----------------------------------|-----------------------------------|-----------------------------------|------------------------------------|-----------------------------------|-----------------------------------|

21

SPRING &  
SUMMER

FABRICS  
CHINA  
TREND

中国纺织面料流行趋势



THANKS!

中国纺织信息中心 / 国家纺织产品开发中心